

560 Little Lake Drive 19
Ann Arbor, MI

\$355,000

MLS# 3279116

BED
3

BATH (FULL/HALF)
2/0

SQ. FT.
1586

ACREAGE
0.01

COUNTY
Washtenaw

SCHOOL DISTRICT
Ann Arbor

TAXES (WINTER/SUMMER)
(\$1,736/\$3,960)

YEAR BUILT
2006

GARAGE
Additional Parking, Detached

STYLE
2 Story, Cape Cod

WATER
Public

BASEMENT
N/A

HEATING / COOLING
Forced Air,Gas,Other

Central



Beautiful, updated condo in Touchstone Cohousing!

You just found the perfect condo! Located in Ann Arbor's far west side is this enticing three-bedroom, two full-bath, two-story condo in Touchstone Cohousing. Well-maintained with upgrades galore, this upper-level home offers the best location in the community, delivering tranquil views of trees and prairie land from your private balcony. The remodeled kitchen, which opens to the eating area and living room, is well-appointed with updated appliances and lots of creative storage. Main level also has laundry area, full bath, and two bedrooms. The finished attic is quite a surprise! Great natural light fills the bedroom and office cove/flex space; a huge walk-in closet and full bathroom round out the top level. Updates include: California Closets, Hunter Douglas window treatments, cork flooring, high-end carpet, mini-split units, reverse osmosis, updated lighting, and retractable awning over balcony. Oh, and the detached, oversized garage offers extra storage space! HOA is only \$267/month. Low township taxes. Touchstone is an intentional community combining private homes with community-centric values. It's a great place to raise kids and age in place! To learn more, visit www.touchstonecohousing.com.



Leading
REAL ESTATE COMPANIES
OF THE WORLD



Kirsten Row-Shafer

📞 734-546-7439

🏠 734-239-8291

✉ kirsten1@realestateone.com

💻 kirstenrow-shafer.realestateone.com

560 Little Lake Drive 19
Ann Arbor, MI

\$355,000

BED
3

BATH (FULL/HALF)
2/0

SQ. FT.
1586

ACREAGE
0.01

COUNTY
Washtenaw

SCHOOL DISTRICT
Ann Arbor

TAXES (WINTER/SUMMER)
(\$1,736/\$3,960)

YEAR BUILT
2006

GARAGE
Additional Parking, Detached

STYLE
2 Story, Cape Cod

WATER
Public

BASEMENT
N/A

HEATING / COOLING
Forced Air,Gas,Other

Central



Leading
REAL ESTATE COMPANIES
OF THE WORLD



**Kirsten
Row-Shafer**

📞 734-546-7439

🏠 734-239-8291

✉️ kirsten1@realestateone.com

💻 kirstenrow-shafer.realestateone.com

560 Little Lake Drive 19
Ann Arbor, MI

\$355,000

BED
3

BATH (FULL/HALF)
2/0

SQ. FT.
1586

ACREAGE
0.01

COUNTY
Washtenaw

SCHOOL DISTRICT
Ann Arbor

TAXES (WINTER/SUMMER)
(\$1,736/\$3,960)

YEAR BUILT
2006

GARAGE
Additional Parking, Detached

STYLE
2 Story, Cape Cod

WATER
Public

BASEMENT
N/A

HEATING / COOLING
Forced Air,Gas,Other

Central



Leading
REAL ESTATE COMPANIES
OF THE WORLD



**Kirsten
Row-Shafer**

📞 734-546-7439

🏠 734-239-8291

✉ kirsten1@realestateone.com

💻 kirstenrow-shafer.realestateone.com

560 Little Lake Drive 19
Ann Arbor, MI

\$355,000

BED
3

BATH (FULL/HALF)
2/0

SQ. FT.
1586

ACREAGE
0.01

COUNTY
Washtenaw

SCHOOL DISTRICT
Ann Arbor

TAXES (WINTER/SUMMER)
(\$1,736/\$3,960)

YEAR BUILT
2006

GARAGE
Additional Parking, Detached

STYLE
2 Story, Cape Cod

WATER
Public

BASEMENT
N/A

HEATING / COOLING
Forced Air,Gas,Other

Central



Leading
REAL ESTATE COMPANIES
OF THE WORLD



**Kirsten
Row-Shafer**

📞 734-546-7439

🏠 734-239-8291

✉️ kirsten1@realestateone.com

💻 kirstenrow-shafer.realestateone.com

560 Little Lake Drive 19
Ann Arbor, MI

\$355,000

BED
3

BATH (FULL/HALF)
2/0

SQ. FT.
1586

ACREAGE
0.01

COUNTY
Washtenaw

SCHOOL DISTRICT
Ann Arbor

TAXES (WINTER/SUMMER)
(\$1,736/\$3,960)

YEAR BUILT
2006

GARAGE
Additional Parking, Detached

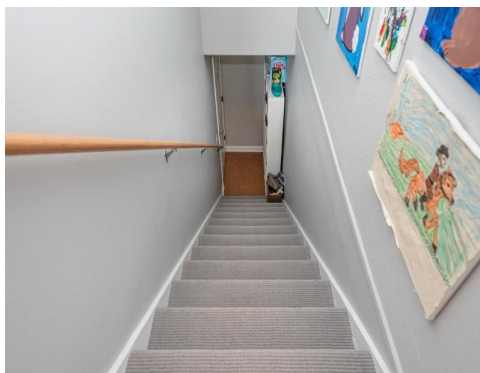
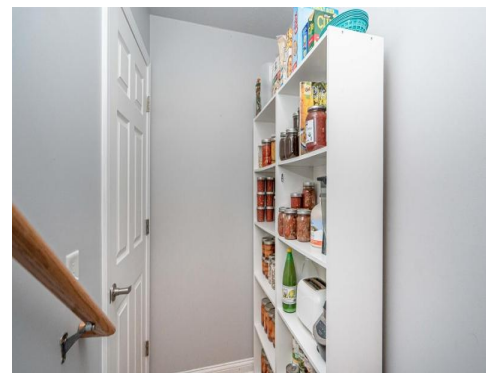
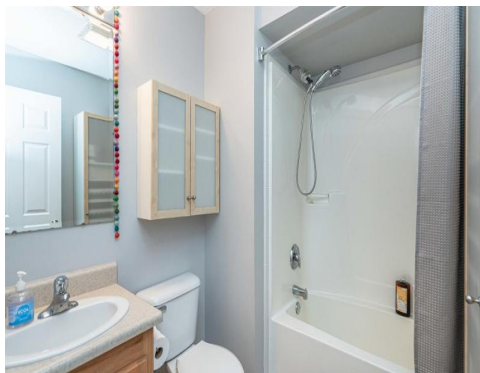
STYLE
2 Story, Cape Cod

WATER
Public

BASEMENT
N/A

HEATING / COOLING
Forced Air,Gas,Other

Central



Leading
REAL ESTATE COMPANIES
OF THE WORLD



**Kirsten
Row-Shafer**

📞 734-546-7439

🏠 734-239-8291

✉ kirsten1@realestateone.com

💻 kirstenrow-shafer.realestateone.com

560 Little Lake Drive 19
Ann Arbor, MI

\$355,000

BED
3

BATH (FULL/HALF)
2/0

SQ. FT.
1586

ACREAGE
0.01

COUNTY
Washtenaw

SCHOOL DISTRICT
Ann Arbor

TAXES (WINTER/SUMMER)
(\$1,736/\$3,960)

YEAR BUILT
2006

GARAGE
Additional Parking, Detached

STYLE
2 Story, Cape Cod

WATER
Public

BASEMENT
N/A

HEATING / COOLING
Forced Air,Gas,Other

Central



Leading
REAL ESTATE COMPANIES
OF THE WORLD



**Kirsten
Row-Shafer**

734-546-7439



kirsten1@realestateone.com



kirstenrow-shafer.realestateone.com

560 Little Lake Drive 19
Ann Arbor, MI

\$355,000

BED
3

BATH (FULL/HALF)
2/0

SQ. FT.
1586

ACREAGE
0.01

COUNTY
Washtenaw

SCHOOL DISTRICT
Ann Arbor

TAXES (WINTER/SUMMER)
(\$1,736/\$3,960)

YEAR BUILT
2006

GARAGE
Additional Parking, Detached

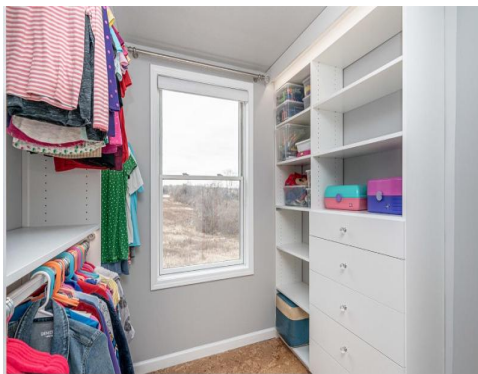
STYLE
2 Story, Cape Cod

WATER
Public

BASEMENT
N/A

HEATING / COOLING
Forced Air,Gas,Other

Central



Leading
REAL ESTATE COMPANIES
OF THE WORLD



**Kirsten
Row-Shafer**

📞 734-546-7439

🏠 734-239-8291

✉ kirsten1@realestateone.com

💻 kirstenrow-shafer.realestateone.com