

PRESENTED BY:

Jane L Finkbeiner

jane@praxisproperties.com

Cellular: 734-323-0019

Phoenix Company

117 N. First St., Suite 80 Ann Arbor MI

734-971-6850

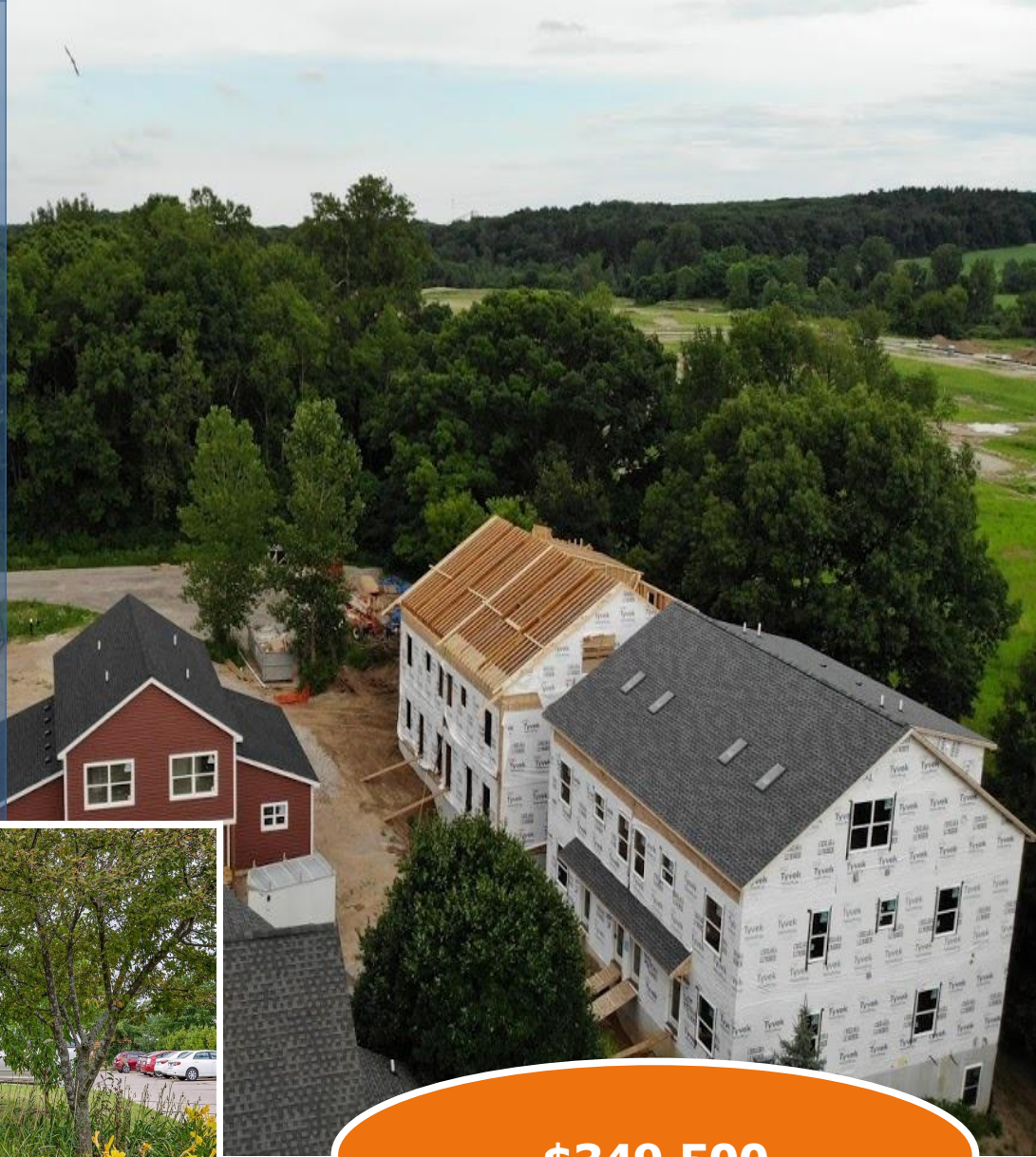
BEDS: 3

BATHS: 2 (2 0)

SQ. FEET: 1,748

LOT SIZE:

YEAR BUILT: 2020



\$349,500

New - Under Construction - Fall Occupancy - Touchstone Cohousing Neighborhood - Final Phase -Scio Township - Ann Arbor Schools - On Bus Route - Easy Access To Shopping And Freeway's. Enjoy This 1748 sq.ft. 2nd Story Condo With Tree Lined South West Exposure. Featuring 9' Ceilings, 3 Bedrooms, 2 Full Baths, With A Family Room/Loft And Balcony Off Living Room. Selections Include 42 Maple Painted Cabinets, Granite Countertops, Appliance Allowance, Flooring A Blend Of Luxury Vinyl Tile, Carpet and Ceramic Tile. Touchstone Community Features Wide Pathways

560 Little Lake #36, Ann Arbor, MI 48103

